



Illustrations are exemplary and may show optional equipment.  
Subject to errors and changes.

## SpeedLine 22 ADVANCED

### FULLY AUTOMATIC CRIMPING MACHINE FOR TYPICAL APPLICATIONS

#### Machine for High Productivity

With the SpeedLine fully automatic crimping machines, Schäfer offers innovative swing-arm cable processing machines for high productivity and diverse applications.

The platform was developed for different machine variants to provide maximum flexibility for customer-specific requirements. Minimal machine downtime, ergonomic working heights, and the safety concept were the main focus.





## FULLY AUTOMATIC CRIMPING MACHINE FOR TYPICAL APPLICATIONS

### Specific Machine Configuration

This fully automatic crimping machine offers up to four stations, providing the equipment scope for typical cable productions. The machine configuration is specifically adaptable from a range of optional components and modules. The high-quality components and robust design secure maximum precision and durability.

### Production in Highest Quality

To ensure product quality, Schäfer offers optional extensions. The crimp force monitoring reliably evaluates the quality of crimp connections. The conductor quality monitoring reports defective parts due to faulty stripping, and the optical cable quality monitoring inspects the produced cables. This ensures that defective cables cannot be used in further production.

### Conform with the Machinery Directive

The crimping machine for production of high quality connections in terminal and wire processing fully complies with the European directives regarding mechanical and electrical safety as well as electromagnetic compatibility.



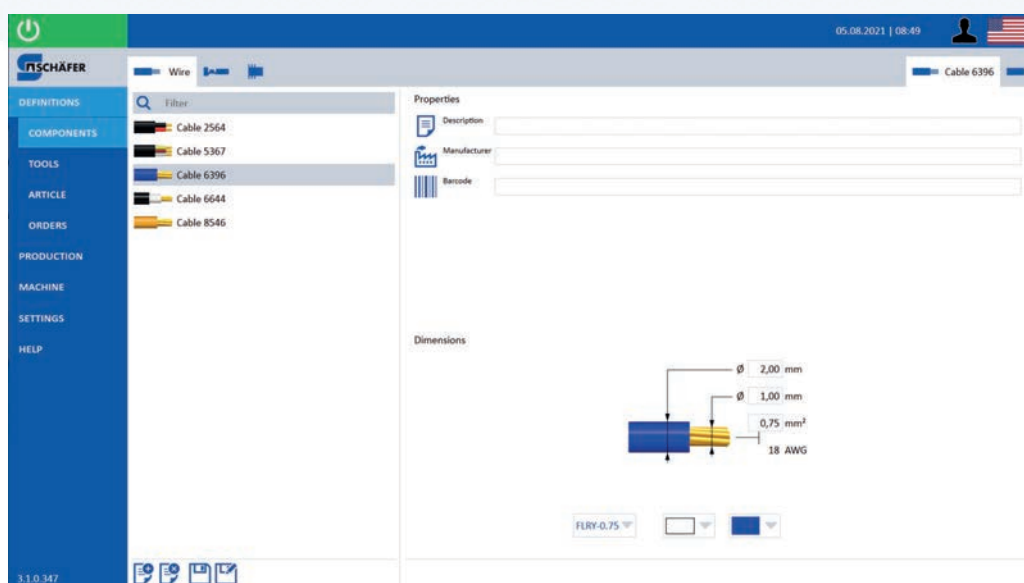


## HMI SOFTWARE FOR WIRE PROCESSING MACHINES

### Intuitive and safe Operating Concept

The WireStar HMI software supports optimum process sequences through its user-friendly operator interface and constant data availability from previous productions. Interaction via the modern user interface is done via a touchscreen and offers a safe handling of the machine.

WireStar's excellent networkability contributes to central process coordination and supports through extensive and configurable database management. The integrated networking with Schäfer Connect facilitates process coordination with the operator's planning system for resources, for example the ERP system.



## MACHINE EQUIPMENT

### Base Equipment

- Crimping stations
- Base frame including control cabinet
- Station tables and operating desk
- Wire straightener and swivel arms
- Programmable wire feeder
- Programmable cut and strip module
- Blade assembly and bad part cutter
- Pneumatic machine guard
- PC with touch screen display
- Machine software WireStar
- Networking and interfacing functions

### Optional Extensions

- Seal station
- Double wire straightener
- Crimp height adjustment
- Press height adjustment
- Wire stacking module
- Carrier strip chopper
- Wire doubling module
- Applicator shuttle
- Crimp force monitoring
- Cable quality monitoring
- Conductor quality monitoring

## TECHNICAL DATA

### Processable materials

Wire	Single and multi-core wires [1]
	Cross section: 0.08 mm <sup>2</sup> – 6 mm <sup>2</sup> [1]
	Insulation: Teflon, PVC, etc.

### Processing

Wire feeding	Belt drive with up to 10 m/s
Cut length	30 mm – 99 m [1]
Production rate	> 5.000 pcs/h by 50 mm wire length (Crimp/Crimp) [1]

### Performance and geometry

Drive	Servo motors
Number of stations	up to 4 Stations

### Controls

Software	WireStar
Display	21" Touchscreen

### Supplies and interfaces

Power supply	3x (208-480 V), 50/60 Hz, 3,5 kVA
Compressed air	6 bar
Interfaces	RS232 Ethernet

### Dimensions and weight

Width x Depth x Height	3350 x 1450 x 1800 mm [2]
Weight	1050 kg [2]

[1] Depending on the configuration of wire and terminal.

[2] Approximate indication for basic equipment.

## CONTACT US

### Schäfer Werkzeug- und Sondermaschinenbau GmbH

Dr.-Alfred-Weckesser-Straße 6  
76669 Bad Schönborn  
Germany  
Phone: +49 7253 9421 0  
Fax: +49 7253 9421 94  
E-Mail: [info@schaefer.biz](mailto:info@schaefer.biz)

## FURTHER INFORMATION

**[WWW.SCHAEFER.BIZ](http://WWW.SCHAEFER.BIZ)**

